



South Gloucestershire
Learning Difficulties Partnership Board

Annual Report

JANUARY 2017 TO DECEMBER 2017

Working to achieve better life chances
for people with learning disabilities

Things in this report

Introduction from the Co-Chairs

What is Valuing People Now?

The Learning Difficulties Partnership Board

Members of the Learning Difficulties Partnership Board

LDPB meeting topics: Health

Transport and Safety

Housing

Education and employment

Personalisation

Learning Difficulties Development Fund

Introduction from the Co-Chairs



We are proud to be able to present to you the 2017 LDPB Annual Report. South Gloucestershire Learning Difficulties Partnership Board has worked to make sure that people with learning difficulties have the same life chances as other people in society.



This has involved the Board working in Partnership with many different groups and organisations to support and develop new opportunities for people with learning difficulties and to make sure that people with learning difficulties see a big difference in their lives.



This report highlights the work of the LDPB over the past 12 months and identifies some of the work that it will focus on in the year to come.



Introduction from the Co-Chairs (Continued)

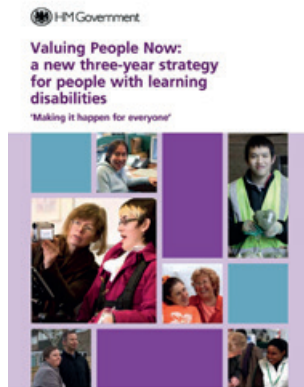


A key priority will be reviewing the effectiveness of the LDPB, and making sure it continues to have an influence over the ways opportunities are available to people with learning difficulties and carers.

Cllr Ben Stokes and
Leigh Campbell,
Co-Chairs of the LDPB



What is Valuing People Now?



A Government Plan called Valuing People Now says that we all need to work together to make sure people with learning difficulties get the same opportunities as everyone and are treated fairly.

Valuing People Now tells us about the most important things that need to happen to make things better for people with learning difficulties.

These are:

- having strong leadership and a good Learning Difficulties Partnership Board in every local authority area
- making sure that the Strategic Health Authorities and Primary Care Trusts are working to make health services better and more accessible



What is Valuing People Now? (Continued)



- giving more housing choices for people with learning difficulties and their families



- helping people with learning difficulties to have control of their lives and get person centred plans



- having more paid jobs of 16 hours a week for people with learning difficulties



- improving the way children and adult services work together so that people are supported to plan for future employment and a full life.

The Learning Difficulties Partnership Board (LDPB)



The Learning Difficulties Partnership Board's main job is to make sure that all the work in Valuing People Now happens. It also helps people with learning difficulties and family carers to have their say.



There are 6 Partnership Board meetings each year. They are open to the public and people are welcome to come and watch. For more information on meeting dates please go to our website:



www.southglos.gov.uk/ldpbmeetings

Members of the Learning Difficulties Partnership Board (LDPB)



Co-chairpersons:

- **Councillor Ben Stokes**
Executive Member for
Adult Care
- **Leigh Campbell**
Co-Chair of the Learning
Difficulties Partnership Board



Service User Representatives:

- Rachael Hillier
- Helen Beer
- Ron Hares
- Andrew Wilson
- Jemma Ballinger

Supported by

- Mark Webster
Penderels Trust

Members of the Learning Difficulties Partnership Board (LDPB) (Continued)



Carers:

- **Lesley Evans**
- **Gill Stephenson**
- **Martin Gray**
- **Sandie Davis**
- **Sheila Forsythe**
- **Dale Cranshaw**
- **David Nicholas**
- **Diana Elliott**



Supported by

- **Tracy Holder**
Learning Difficulties
Carer Support and
Development worker

Members of the Learning Difficulties Partnership Board (LDPB) (Continued)



Council Representatives:

- **Will Bee**
Equalities Officer
- **Jon Shaw**
Head of Commissioning,
Partnerships and Performance
- **Kenny Braidwood**
Service Manager
(Adult Social Care)
- **Colin Martin**
Public Health
- **Sumita Hutchison**
Commissioning Officer

Members of the Learning Difficulties Partnership Board (LDPB) (Continued)



Clinical Commissioning Group:

- **Christopher Mills**
Mental Health and Learning Difficulties Manager
- **Kate Archibald**



Other Organisations:

- **Emily Denham**
Sirona - Learning Difficulties Team Equalities Officer
- **Claire Maine**
Milestones Trust
- **Bruce Mulcahy Bowman**
The Care Forum

The Learning Difficulties Partnership Board is supported by **Andrew Cambridge, Democratic Services.**

Health

Date of LDPB: 10 January 2017



Sirona
care & health



What was said about it:

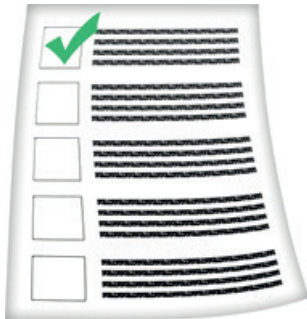
Service users and carers would like doctors to better understand people with learning difficulties.

Emily Denham (Sirona) gave an update on changes in Sirona Care. A team is helping people stay out of hospital if they have mental health problems. There is more support for people with learning difficulties who have an illness called epilepsy. The Keep Well Group is helping people to be healthy.

Chris Mills and Guy Stenson (Clinical Commissioning Group CCG) talked about how there will be one CCG to look after a bigger area. Each local area will need to make a plan about better health services. Transforming Care is about getting better support for people with learning difficulties and autism in their local areas. Most people with learning difficulties should have an annual health check with their doctor.

Health (Continued)

Date of LDPB: 10 January 2017

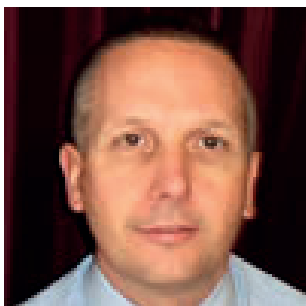


Chris Mills (Clinical Commissioning Group) gave information on the results from the latest Learning Difficulties survey.

Kate Archibald (Clinical Commissioning Group) gave a Transforming Care Update.



Green light toolkit is about better mental health care for people with learning difficulties and autism. It is an information guide for staff. New guidance is being written by Avon and Wiltshire Mental Health Partnership. The LDPB should help with the guidance.



Kenny Braidwood gave an update on the Autism Strategy Group. The group checks how good the support is for people with learning difficulties. The group is working on lots of things like better support for young people with autism.

Health (Continued)

Date of LDPB: 10 January 2017



What the LDPB has worked on:

The LDPB funded Health Watch and The Hive to review how doctors look after people with learning difficulties. They share their work on the Well Aware website.

What the LDPB will work on next year:

Ensure that things are being done so that doctors better understand people with learning difficulties. The LDPB will take this to the Health Scrutiny Committee.

The LDPB will look at new strategies relating to learning difficulties in South Gloucestershire and talk about how they could be better.

Transport and Safety

Date of LDPB: 16 May 2017

What was said about it:



Andreas Mueller (Avon and Somerset Police) talked about the Safe Places. They are places that people with learning difficulties can go if they feel unsafe. This could be shops libraries and police stations. The Safe Places should have a sticker in their window to say they are safe. People who join the safe place scheme will have a special number. The police asked the council to support Safe Places.



Sarah Howard (Brandon Trust) gave hate crime and mate crime training and said that people with learning difficulties can get a job with the group to help with the training.



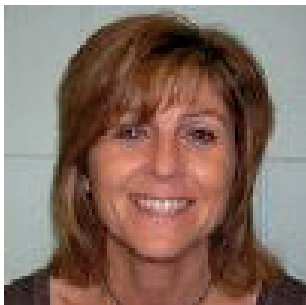
Jennifer Darsh (SARI) talked about how her organisation helps people and their families if hate crime happens to them.

Transport and Safety (Continued)

Date of LDPB: 16 May 2017



Urfan Siddiqi (South Gloucestershire Council) talked about how terrorist organisations are trying to get people with learning difficulties and autism to join them and a project called Prevent helps people work together to stop terrorism. People can tell Prevent if they are worried about someone joining terrorism groups.



Teresa Derrick (South Gloucestershire Council) talked about travel training for younger people. Travel training is important for all ages and can form part of a person's care plan.



Kevin Barley (South Gloucestershire Council) gave a message about the training taxi drivers about people with learning difficulties. This is needed because some people find it hard to use taxis and some taxi drivers can be rude. The LDPB agreed to help with this training.

Transport and Safety (Continued)

Date of LDPB: 16 May 2017

What the LDPB has done



The LDPB have done more work to ensure the Council support the Safe Place scheme. As a result, more places are Safe Places such as the libraries. Staff are trained in Safe Places so they understand what they need to do.



The LDPB have spoken to a team about training for taxi drivers.

What the LDPB will work on next year:

Ensure the Council make the Safe Place scheme bigger and better.

Make sure people who help transport to people with learning difficulties have the right training.

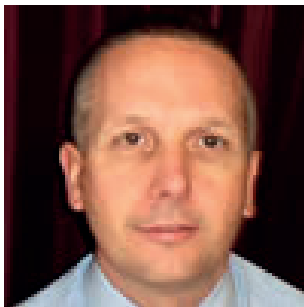
Housing

Date of LDPB: 25 July 2017



What was said about it:

Chris Benson (South Gloucestershire Council) talked about how to get housing and the different types of housing available. He talked about Home Choice which is a way for people to find somewhere to live. A law called the Care Act should help many people with learning difficulties to get housing. To get a house you need to join the housing register.



Kenny Braidwood (South Gloucestershire Council) talked about the support that is available to get housing. Social workers can help people. There is more information on:

www.homechoice.southglos.gov.uk

Housing (Continued)

Date of LDPB: 25 July 2017



Andy Hichens (South Gloucestershire Council) and Louise Edwards (Ategi Shared Lives) talked about the shared lives scheme. This is where people can live with a family or stay for a short time. There will be 15 new carers every year for the next 3 years.



Sumita Hutchison (South Gloucestershire Council) gave an update on 98 Gloucester Road North. There are 9 flats for people with learning difficulties and all people are invited to the event.

What the LDPB worked on:



The LDPB worked to make sure the 98 Gloucester Road North was a good scheme for people with learning difficulties. They worked with people making decisions. They worked to make sure people had the information needed they needed before they moved in.

Housing (Continued)

Date of LDPB: 25 July 2017

What the LDPB will work on next year:



The LDPB will make sure the information booklet on housing for people with learning difficulties is finished and given to those that need it.

Employment and Education

Date of LDPB: 19 September 2017



What was said about it:

Tim Bowles (Mayor of the West of England Combined Authority) talked about how he wants to do as much as possible to support people with learning difficulties into employment and education.



Companies need to support people and there should be training.



The LDPB explained that trying work first is a good way to get a job and this is called work experience or being a volunteer. Also people with learning difficulties need more support at school to get a job in the future.

Employment and Education (Continued)

Date of LDPB: 19 September 2017



Heather Cassell (South Gloucestershire Council) talked about what the council were doing to support people with learning difficulties into employment. There will be more information for people with learning difficulties on lots of thing. This information is called the Local Offer.



Leigh Campbell (Co-Chair of the LDPB) talked about the projects that have been funded by the council to get people into volunteering and employment. This is talked about in the section below how the LDPB has spent their money.

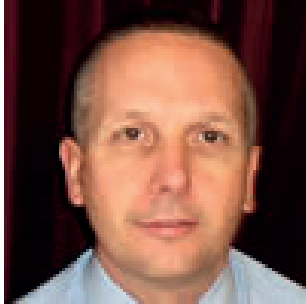
What the LDPB will work on next year:



Work on ways to get people with learning difficulties into employment or volunteering. Work with Mayor Tim Bowles to improve opportunities for people with learning difficulties in employment and education.

Personalisation

Date of LDPB: 7 November 2017



What was said about it:

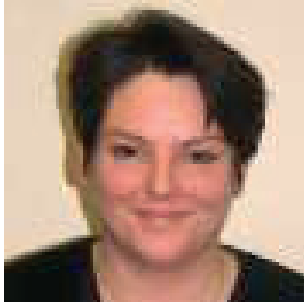
Kenny Braidwood (Adult Social Care Area Services Manager, South Gloucestershire Council) explained what the government are saying about personalisation. He said that the government would like more people to have choice and control over their lives.



Colin Martin (Public Health, South Gloucestershire Council) talked about what had been found from a study on personalisation on people with learning difficulties. By giving people more choice and control over their lives they can live better lives and be healthier.

Personalisation (Continued)

Date of LDPB: 7 November 2017



Denise Swain (Commissioning Manager, South Gloucestershire Council) talked about direct payments and what they can be used for. She also talked about the support that is given to people who want to have a direct payment and the training for personal assistants. In South Gloucestershire 261 people with learning difficulties have direct payments.



Kate Archibald (Clinical Commissioning Group) talked about how the government wants more people with learning difficulties to manage how money is spent on their health and how this is being added to social care money.

Personalisation (Continued)

Date of LDPB: 7 November 2017

What the LDPB will work on next year:



Making information about personalisation easy to understand for people with learning difficulties. Will request that there is a presentation to the Board and for there to be information in a clear format for all people with learning difficulties in South Gloucestershire on the Universal Credit and other changes to benefits.

Suggest that those making decisions about people with learning difficulties give as much control and choice to them.

The Learning Difficulties Development Fund (LDDF) and Valuing People Now projects



The Learning Difficulties Development Fund is money to fund projects to improve the lives of people with Learning Difficulties living in South Gloucestershire.

In 2017 South Gloucestershire Partnership Board was given £100,000 for LD projects.

The Learning Difficulties Development Fund (LDDF) and Valuing People Now projects (Continued)

This is how the money was spent:

Community Express



Carriages is a meeting place for people with learning difficulties to get together and take part in art, crafts and music sessions.



People with learning difficulties can enjoy the Music train and listen to music at the same time.

Warmley Wheelers gives people with learning the opportunity to access the Bath to Bristol cycle path and use bikes that are made for everyone.



For more information visit:
**[www.milestonetrust.org.uk/
community-express](http://www.milestonetrust.org.uk/community-express)**

The Learning Difficulties Development Fund (LDDF) and Valuing People Now projects (Continued)



LD awareness – Primary Schools Learning Difficulty Awareness

This project works with Year 6 primary school children. It tells them about learning difficulties.

For more information visit
www.ldawareness.co.uk



KIDS

The KIDS project supports 12 young people (aged 13-25 years) to enjoy different things that they would like to do like gym sessions. People with learning difficulties will have a support worker to help them to build their confidence and self-esteem to do the things that they enjoy.



For more information visit:
www.kids.org.uk



The Learning Difficulties Development Fund (LDDF) and Valuing People Now projects (Continued)



Supported Employment Partnership

The Supported Employment Partnership works to support people with learning difficulties to find a job. They make sure there is good quality job coaching available to people with learning disabilities in South Gloucestershire.



They will do four things.

- Provide a job coach where it is needed
- Train people on how to get a job.
- Make sure people can find information about this on the website.



You can find the website at:
www.findajobcoach.co.uk

The Learning Difficulties Development Fund (LDDF) and Valuing People Now projects (Continued)



Hivewatch

Healthwatch and The Hive look at places that look after people with learning difficulties like hospitals. They will see if the places are right for people with learning difficulties. They will write a report on this.

This will go on the Well Aware website.

Ready Steady Garden

With Ready Stead Garden people with learning difficulties can learn to do gardening and become a volunteer.

They will::

- Train 14 people with learning difficulties in South Gloucestershire in:
- Teach gardening skills
- Teach how to be healthy and safe when gardening
- Work with each other in a team
- be a volunteer

The Learning Difficulties Development Fund (LDDF) and Valuing People Now projects (Continued)

Kitchen Challenge



The Kitchen Challenge project is for people with learning difficulties to learn about how to cook and how to be healthy. They will also learn to cook in a home kitchen and a restaurant or café kitchen.



People will also learn how to stay healthy and safe when cooking. People will work in groups and share the food they have cooked with each other.



At the end of the project people with learning difficulties will run their own restaurant service to specially invited guests (including local employers), where they will plan their own 3 course menu, prepare, cook and serve all the food themselves. People feel really good at this special meal.

The Learning Difficulties Development Fund (LDDF) and Valuing People Now projects (Continued)



Community and Provider Connecting

The Community Connector makes sure that people with learning difficulties know about all the activities and clubs they can go to.



It will help people to:

- Find out what social and leisure activities are available in communities and to promote them
- Support people to socialise together
- Share transport such as taxis to leisure activities
- Share support so that people can have more fun
- Bring people together



The Learning Difficulties Development Fund (LDDF) and Valuing People Now projects (Continued)

Conclusions



This is a very exciting time for the LDPB. In 2018 it will build on what it has achieved this year and will support service providers to make their services more relevant to people with learning difficulties at a time when there is a need to get it right the first time. The LDPB looks forward to making an even bigger positive difference to the lives and prospects of people with learning difficulties.